

SureChip™

Cancellous Bone - Chip



Cancellous



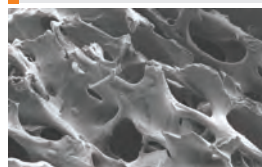
Cancellous Bone offers an osteoconductive scaffold for promoting bone regeneration.

Used either alone or as part of a composite bone graft, cancellous bone supplies a natural scaffold facilitating the attachment of osteogenic precursor cells. Cancellous Bones have good osteoconductive properties and are very well suited to fill defects in the bony structure. Due to their natural origin and optimal porosity, cancellous bone is readily remodeled by the human body and are replaced by new host bone.



Cancellous

+ Cancellous



· Open trabecular (fibrous and rod-shape supporting tissue in the body) structure assembles natural bone in a way that it has identical mineral structure and collagen. It then facilitates cells to be settled and promotes bone remodeling.

Characteristics

- 100% Allograft Cancellous Bone Chip
- 3-dimensional lattice structure enables a fast revascularization
- Osteoconductive ability
- Osteoinductive ability
- Excellent biocompatibility

Application

- Bony void filler of the extremities and pelvis to prevent fractures
- Bone graft extender (extremities, spine, pelvis) with autograft or allograft
- Surgically created osseous defects or osseous defects created from traumatic injury to the bone
- Improved healing of fracture and nonunions

Specification

| Product | Cat No. | Size | Particle Size | Type | Contents |
|-------------------|---------|-------|---------------|------|-----------------|
| SureChip™ Chip | BC03 | 3 cc | 4~10 mm | Chip | Cancellous Bone |
| | BC05 | 5 cc | | | |
| | BC10 | 10 cc | | | |
| | BC15 | 15 cc | | | |
| | BC30 | 30 cc | | | |



HansBiomed Corp.

807, 55, Seongsuil-ro, Seongdong-gu, Seoul, Korea

T. +82-2-466-2266 F. +82-2-463-1554

HansBiomed Daeduck Institute

64, Yuseong-daero 1628beon-gil, Yuseong-gu, Daejeon, Korea

T. +82-42-478-9001 F. +82-42-478-9006

www.HansBiomed.com

www.HansGBR.com

www.BellaGel.net

www.MintLift.com